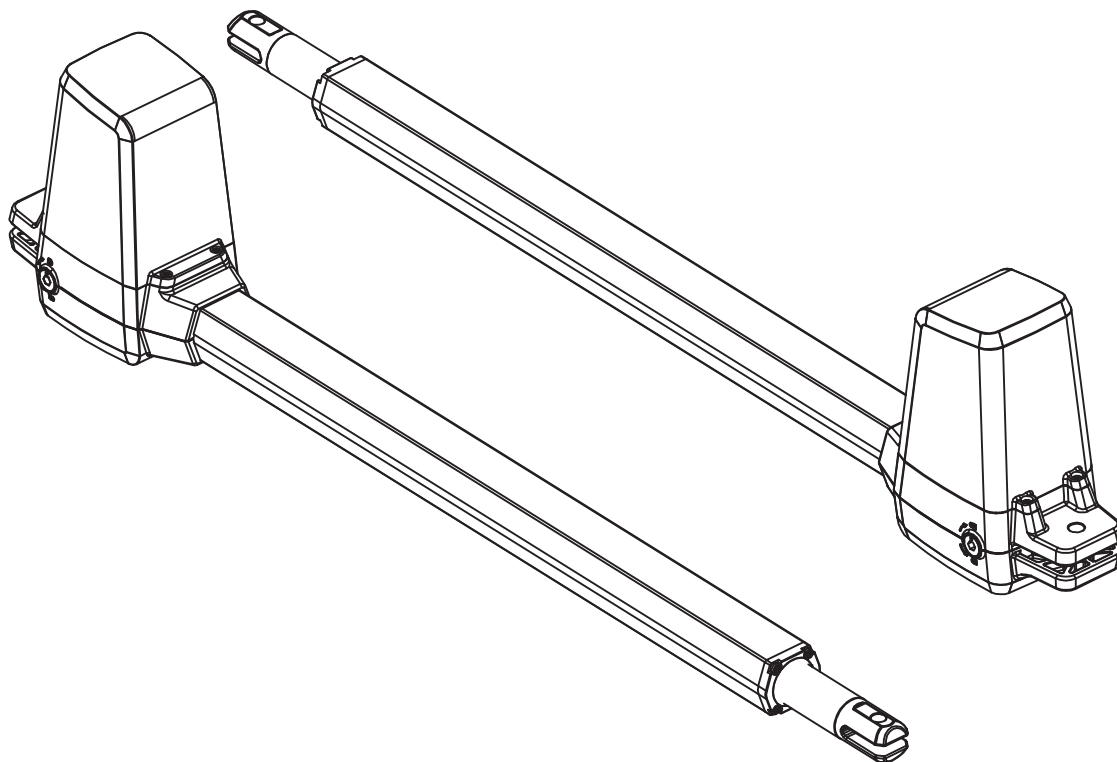


TERRIER SERIES

SWING GATE OPENER

USER MANUAL



Reuse
Reduce
Recycle



INDEX

1.1	GENERAL SAFETY PRECAUTION	1
1.2	INSTALLATION	2
	A. STANDARD INSTALLATION	2
	B. DIMENSIONS OF MOTOR:	2
	C. INSTALLSTION DATA SHEET	3
	D. MOTOR FIXING	4
	E. WIRE CONNECTION:	4
	F. EMERGENCY RELEASE	5
1.3	TECHNICAL FEATURES	6
1.4	TM3 TRANSMITTER DATA SHEET	6
1.5	PH5 PHOTOCCELL DATA SHEET	6
1.6	FL2 FLASHING LIGHT DATA SHEET	6
1.7	P1 WIRELESS KEYPAD DATA SHEET	6
1.8	K1 KEY SELECTOR DATA SHEET	6
1.9	MAINTENANCE	6

1.1 GENERAL PRECAUTION:

WARNING :

This user manual is only for qualified technicians who is specialized in installations and automations.

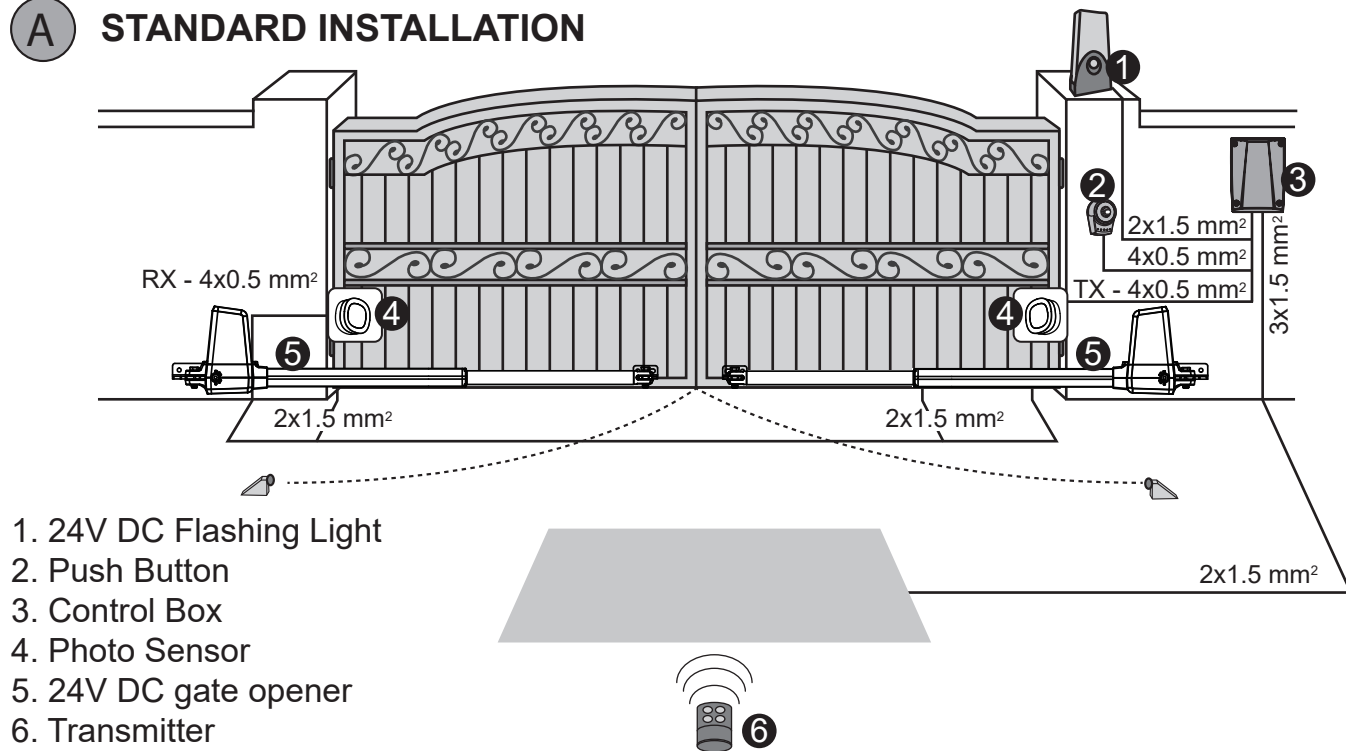
- (1) All installations, electrical connections, adjustments and testing must be performed only after reading and understanding of all instructions carefully.
- (2) Before carrying out any installation or maintenance operation, disconnect the electrical power supply by turning off the magneto thermic switch connected upstream and apply the hazard area notice required by applicable regulations
- (3) Make sure the existing structure is up to standard in terms of strength and stability
- (4) When necessary, connect the motorized gate to reliable earth system during electricity connection phase.
- (5) Installation requires qualified personnel with mechanical and electrical skills.
- (6) Keep the automatic controls (remote, push bottom, key selectors...etc) being placed properly and away from children.
- (7) For replace or repair of the motorized system, only original parts must be applied. Any damage caused by inadequate parts and methods will not be claimed to motor manufacturer.
- (8) Never operate the drive if you have any suspect with what it might be faulty or damage to the system.
- (9) The motors are exclusively designed for the gate opening and closing application, any other usage is deemed inappropriate. The manufacture should not be liable for any damage resulting from the improper use. Improper usage should void all warranty, and the user accepts sole responsibility for any risks thereby may accrue.
- (10) The system may only be operated in proper working order. Always follow the standard procedures by following the instructions in this installation and operating manual.
- (11) Only command the remote when you have a full view of the gate.

TMT AUTOMATION INC. shall not be liable for any injury, damage, or any claim to any person or property which may result from improper use or installation of this system.

Please keep this installation manual for future reference.

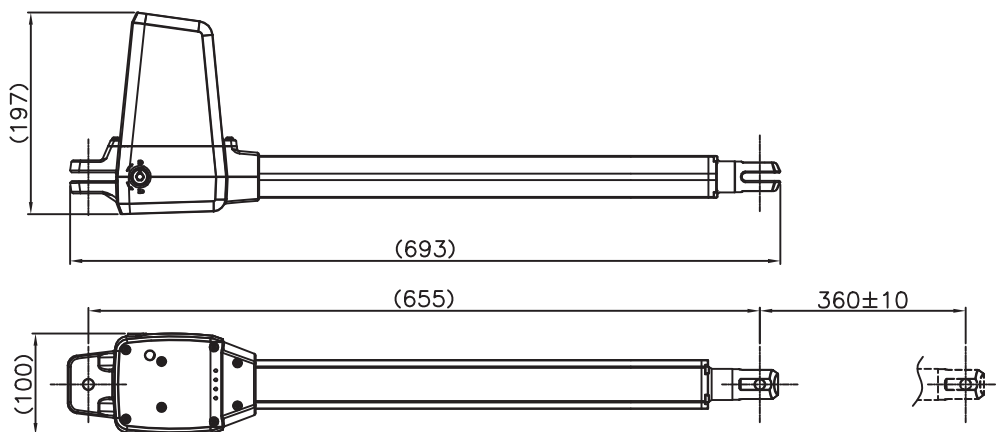
1.2 STANDARD INSTALLATION

A STANDARD INSTALLATION

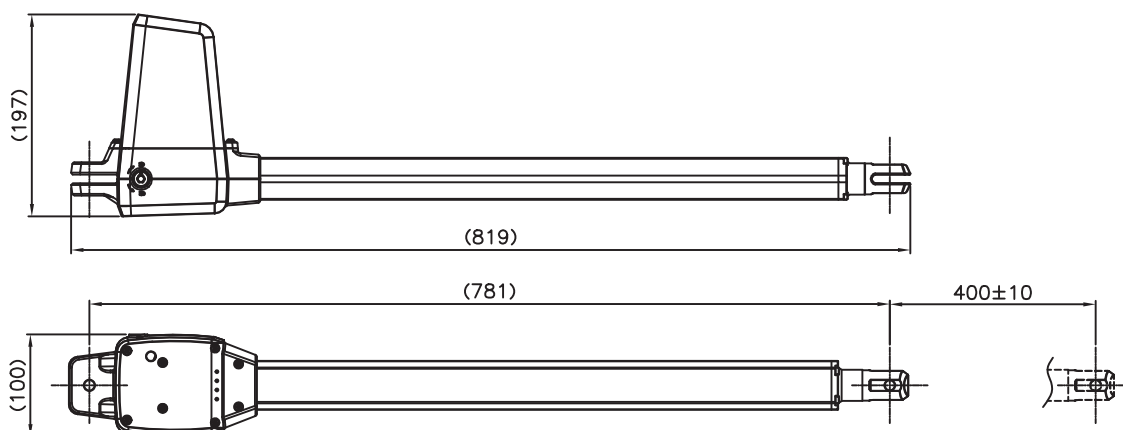


B DIMENSIONS OF MOTOR:

TERRIER150



TERRIER200



C INSTALLTION DATA SHEET

Comply with the measures shown on the chart for proper installation. Adjust the gate structure to fit it for best automation, if necessary.

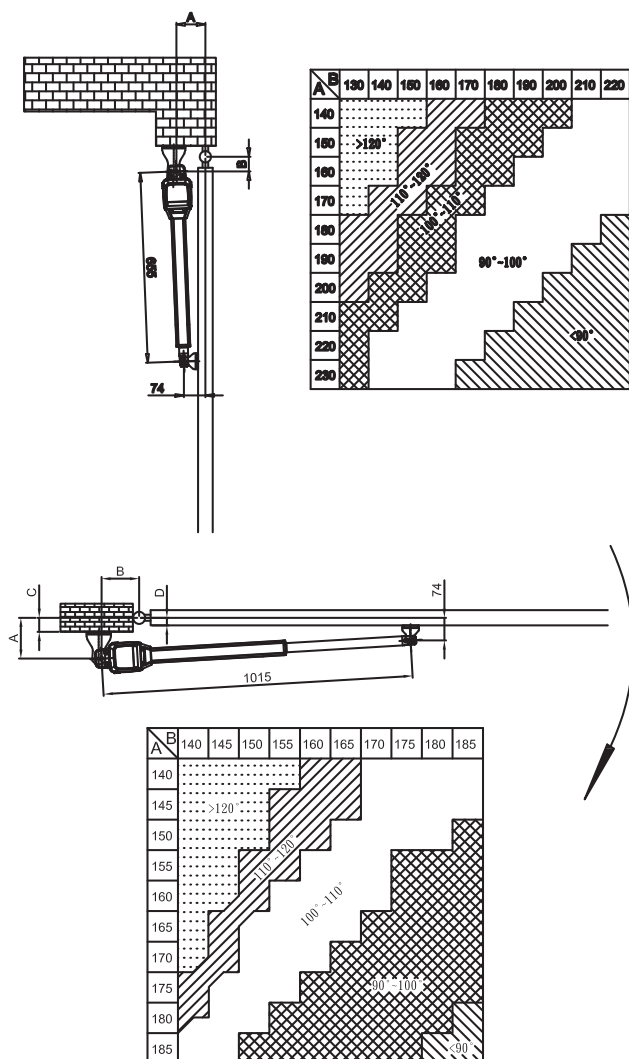
Before preceding the installation, be sure that gate moves freely and that:

- 1) Hinges are properly positioned and greased.
- 2) No obstacles in the moving area.
- 3) No frictions between two gate leafs or with the ground while moving
- 4). "C" value is 88mm.
- 5). "D" can be measured from the gate easily.
- 6). "A" = "C" + "D"
- 7). The value of "B" can be calculated from the value of "A" and the leaves opening angle.

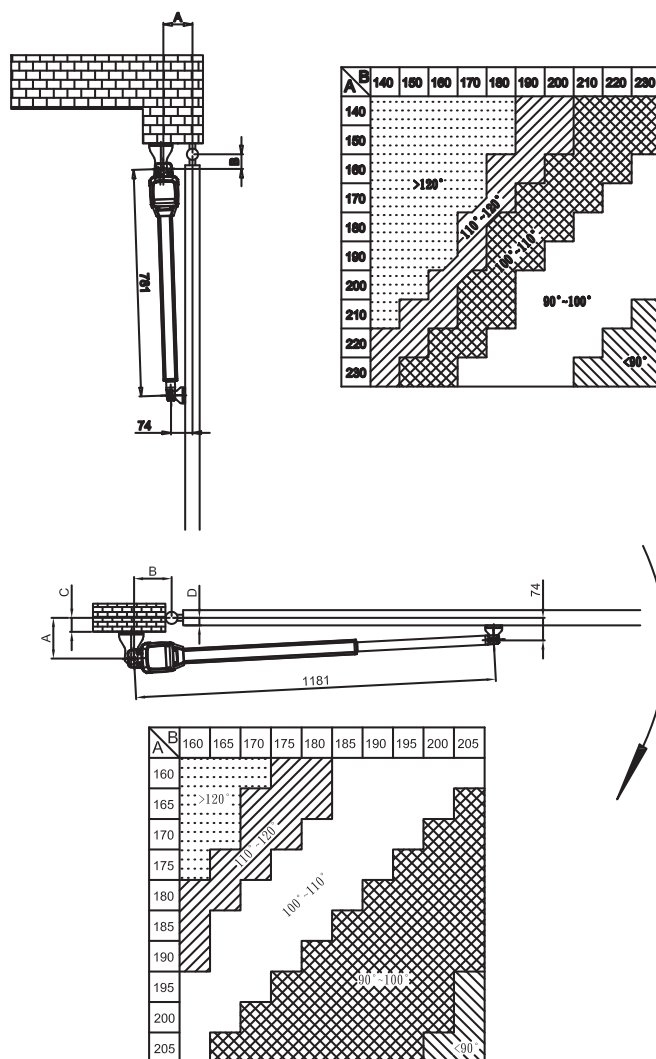
Ex. If "A"=160mm with the leaves opening angle of 100 degrees, then the value of "B" is approximate 200mm.

**Please make sure "B" and "A" are similar or the same in value that the leaves can be operated smoothly, also to reduce the burden of the motor.

TERRIER150

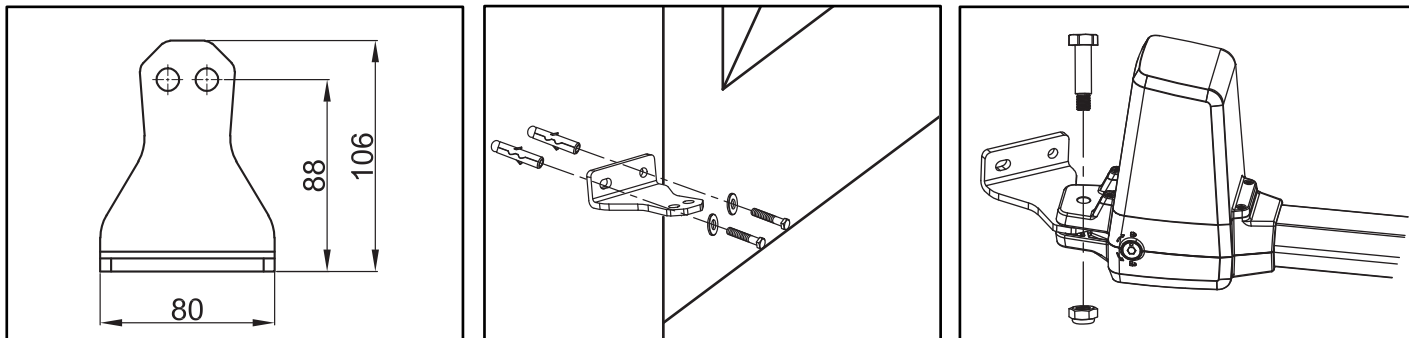


TERRIER200



D MOTOR FIXING

Assemble the rear bracket and fix it on the pillar.



Release the gate opener and place the pin into the fitting position no.1 and no. 2

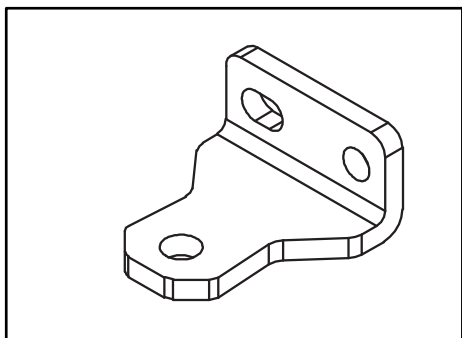
Make sure the gate openers are mounted in horizontal position especially in those positions.

1) Gate in “CLOSE” position

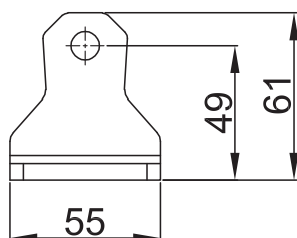
2) Gate in “OPEN” position

3) Gate at “45 ° angle” position

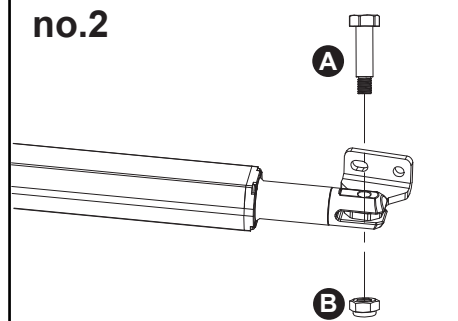
Prior to weld the bracket on the gate leaf(if necessary), cover the gate opener to prevent damages from sparks.



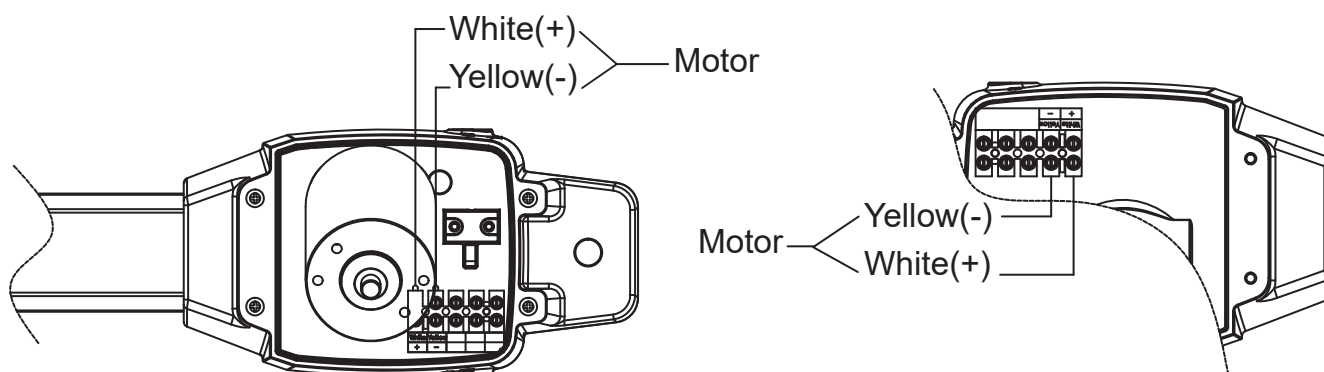
no.1



no.2



E WIRE CONNECTION:



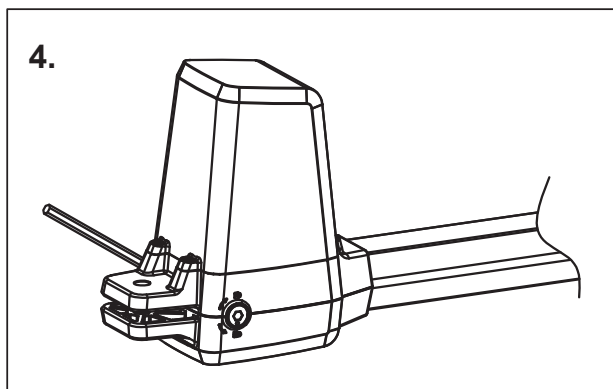
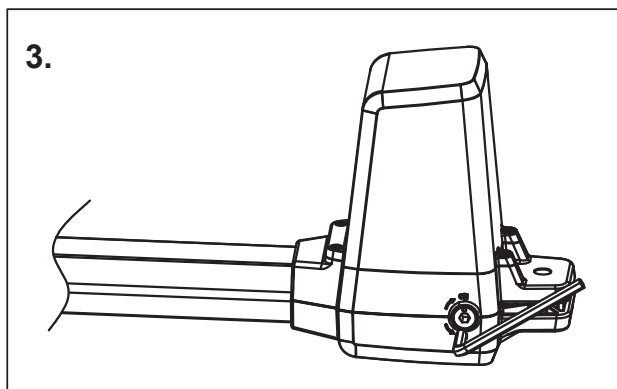
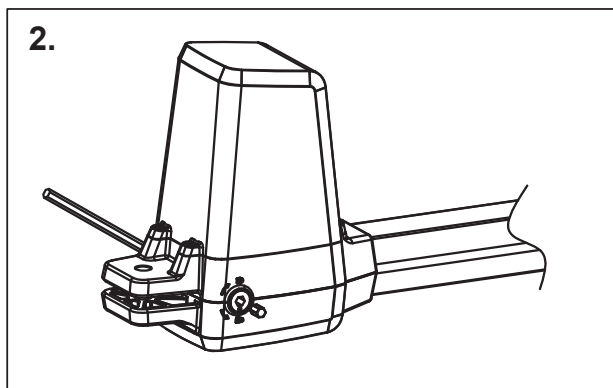
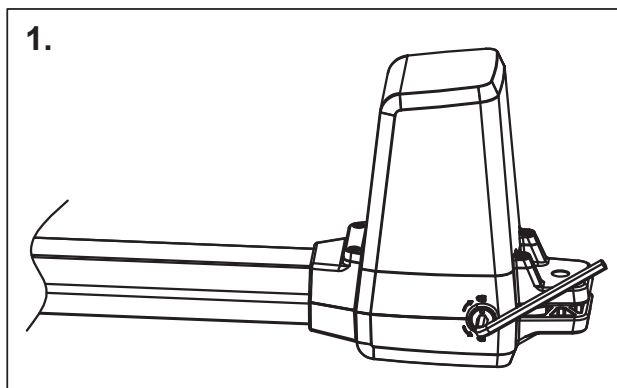
(1) Avoid tension in the cable during open and close phase.

(2) Always connect the grounding wire(GND)

F EMERGENCY RELEASE

Gear Motor Release (for left motor)

- 1). Insert the release key to the release slot
- 2). Turn the release key anti-clockwise
- 3). Pull out the release bar
- 4). Turn the release key clockwise to fix the release bar, the release bar has to be in pulled out position when you turn the release key clockwise
- 5). The turning direction will be reversed for right motor.



1.3 TECHNICAL FEATURES :

	TERRIER150	TERRIER200
Motor	24Vdc motor with mechanical release	24Vdc motor with mechanical release
Gear type	Worm gear	Worm gear
Thrust	1500N	2000N
Stroke length	360mm	400mm
Power supply	24Vdc	24Vdc
Maximum operating	4.2A for maximum 10 seconds.	4.2A for maximum 10 seconds.
Maximum gate weight	150 kg per leaf	200 kg per leaf
Maximum gate length	2 meters	2.5 meters
Duty cycle	20%	20%
Operating Temperature	-20°C~+50°C	-20°C~+50°C
Dimension	694mm * 100mm * 197mm	819mm * 100mm * 197mm
Weight	3.1kg	3.6kg

1.4 TM3 TRANSMITTER DATA SHEET

Application	Radio transmitter
Frequency	433.92Mhz
Coding	Rolling code
Buttons	4, for single-gate or dual-gate operation
Power Supply	3V with one CR2032 button type lithium battery
Operating Temperature	-20°C~+50°C
Dimension	71.5mm * 33mm * 14mm

1.5 PH5 PHOTOCELL DATA SHEET

Detection type	Through beam
Operating distance	25 meters
Response time	100ms
Input voltage	AC/DC 12~24V
Operating Temperature	-20°C~+60°C
Protection class	IP54
Dimension	96mm * 45mm * 43mm

1.6 FL2 FLASHING LIGHT DATA SHEET

Application	For outdoor use
Installation	Wall mounted vertically
Operating Temperature	-20°C~+50°C
Dimension	85mm * 60.5mm * 40.5mm

1.7 P1 WIRELESS KEYPAD DATA SHEET

Power	6Vdc, 2xCR2032 battery or 4xCR2016 battery
Battery life	2 years, under 10times/day
Frequency	433.92 MHz +/- 75KH
Trasmit power	1mW
Coding	HCS101 Standard
Working temp	-20oC~+55oC
Coding digit	0-8 digits
Distance	80m for openspace, 20m for inner space
Protection grade	IP54
Dimensions	85x75x35mm
Weight	150g

1.8 K1 KEY SELECTOR DATA SHEET

Application	For outdoor use
Installation	Wall mounted vertically
Operating Temperature	-20°C~+50°C
Dimension	85mm*60.5mm*40.5mm

1.9 MAINTENANCE:

Conduct the following operations at least every 6 months. If in high intensity of use, shorten the period in between.

Disconnect the power supply:

- (1) Clean and lubricate the screws, the pins, and the hinge with grease.
- (2) Check the fastening points are properly tightened.
- (3) Make the wire connection are in good condition.

Connect the power supply:

- (1) Check the power adjustments.
- (2) Check the function of the manual release.
- (3) Check the function of photocells or other safety devise.