



**T**ALENT  
**M**ERGE  
**T**ECHNOLOGY  
[www.tmt-automation.com](http://www.tmt-automation.com)

## YOUR SMART AUTOMATIC GUARD

Integrated automation for garage doors, gates with  
security doorbells, security cameras, and more

 **TMT  
AUTOMATION INC.**

# CONTENTS

# ABOUT

TMT

Page 02

# Chow!

APP

Page 04

# IOT

SOLUTION

Page 06

# Application

Page 08

# Smart Module

WiFi/Bluetooth

Page 09

# NEW

PRODUCT

Page 10

# Swing

AUTOMATION

Page 16

# Sliding

AUTOMATION

Page 26

# Garage Door

AUTOMATION

Page 32

# Accessories

Page 38

# ABOUT TMT AUTOMATION

TMT started as a small company that manufactured motors and actuator for some of the biggest names in the industry. Over the past decades, over 100 million units of our products have been sold. Throughout the years, our manufacturing and design skills have been honed to surpass the international standards and become a leader in the gate automation industry.

TMT has its own in-house development and production teams, which can guarantee that you have the best products. Each item is rigorously inspected and tested; our quality assurance will exceed even the most scrupulous of standards. Our refined products serve to bring you, our esteemed customers, the best experience possible. Just like us, you have worked hard to be where you are, and that's why you deserve the very best.

**90%+**

Key Components  
made in-house

**2005**

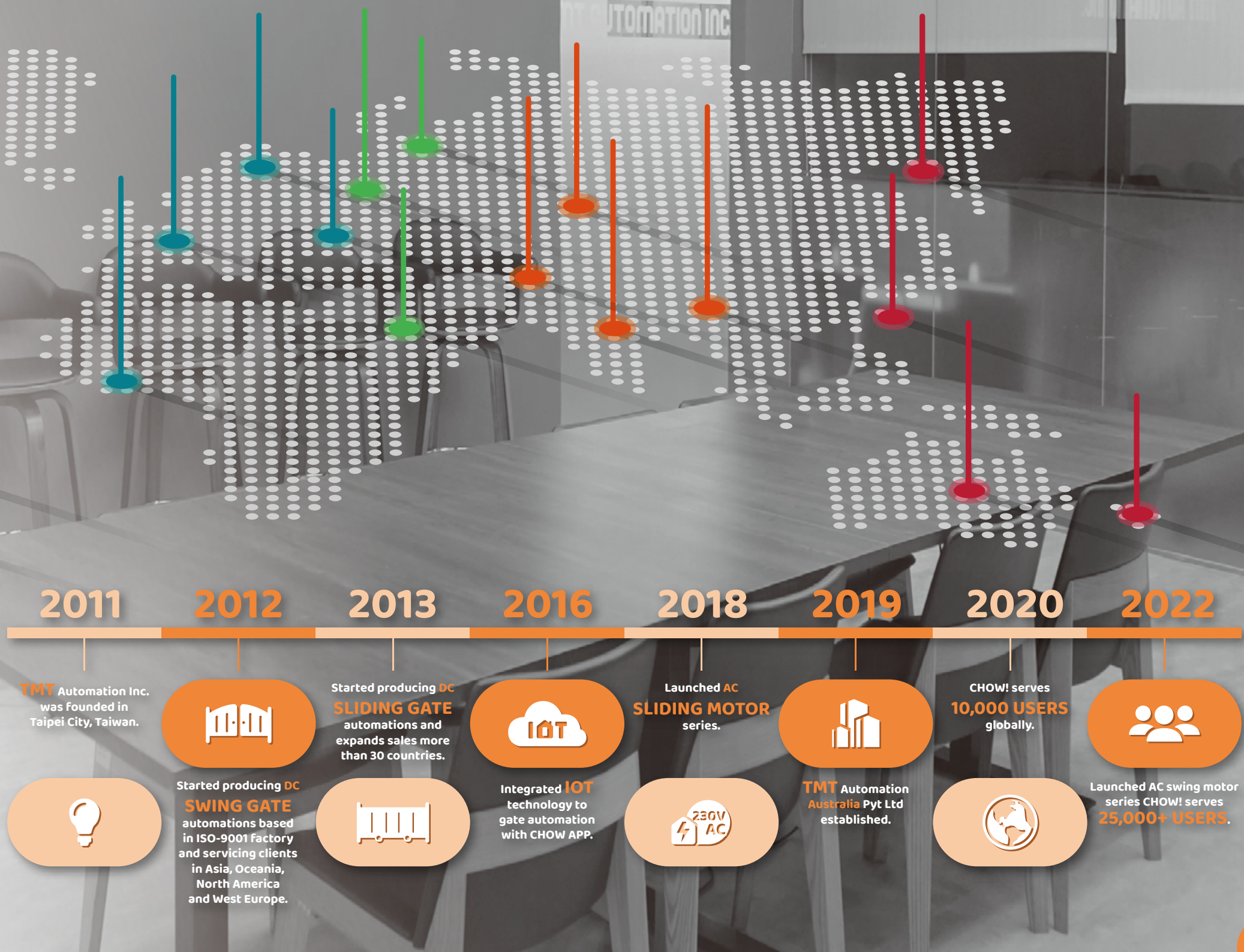
Founded in  
Taiwan

ISO 9001 Certified for  
Outstanding Quality  
Management

We  
Serve  
Over  
**50**  
COUNTRIES







# PROFESSIONAL GRADE QUALITY

## Have you thought about how convenient your life could be with this home automation APP?

Comparing with those remote controls we had back in the day, TMT Chow! can do a lot more. It is not only an accessory for opening and closing doors but also a very thoughtful assistant helping you to manage your home doors anytime, anywhere. With TMT Chow! in hand, no more worries when you are miles and miles away.

## Different from a remote control, TMT Chow! allows you to...

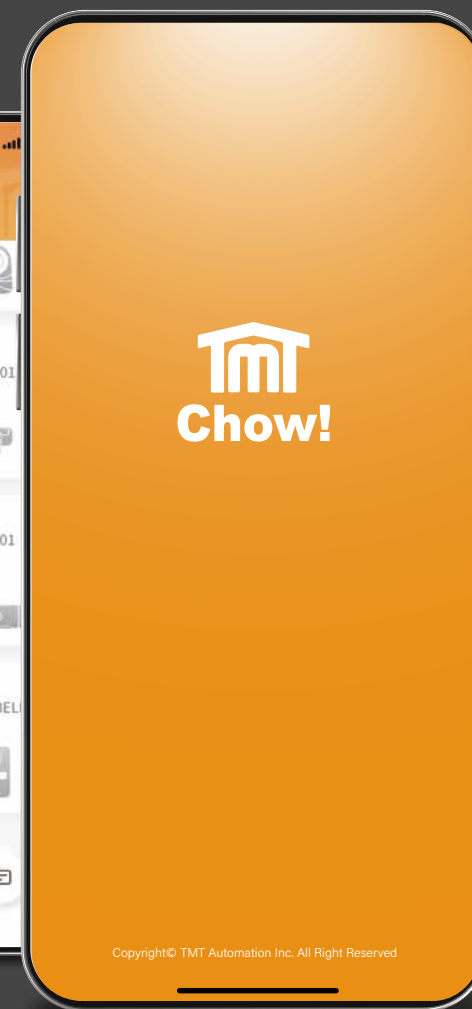
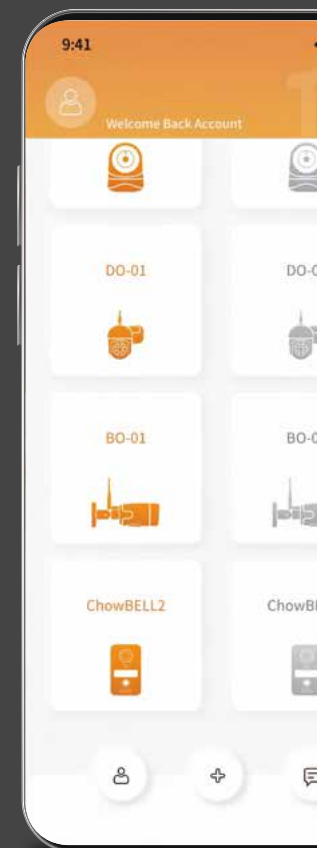
- Control home gates/doors both with mobile data or Wi-Fi wherever you go and with Bluetooth technology when you are nearby.
- Manage multiple devices on this single App.
- Get a phone notification in no time when any modification happens to your gate opener.
- Complete programming without disassemble the opener.

## Features that put a smile on everyone's face:

- Intuitive operation for home automation beginners: TMT Chow! is designed based on a real remote control is absolutely easy to use.
- Easier Setup for installers: Instead of disassemble equipment, you can setup by phone and make your work much more efficient.
- Open/Closed notifications for hard working dads: This is necessary if you always have to work late. It allows you to make sure family get home safely and gives you peace of mind.
- Opening or closing gate with a tap for super moms: It is so much easier and faster to open the gate on your phone when kids come home while you are cooking dinner.







# ChowHUB WBT

## Pairing With ChowCAM Series Or ChowBELL For A Thorough Safety Features

Operation the motor with multiple access Wi-Fi / Bluetooth / Remotes.

Dual smartphone connection with Wi-Fi and Bluetooth to switch from remotely and on-site operation.

Removable connection terminals for easy installation  
Compatible with a variety of gate openers: Swing gate opener / Sliding gate opener / Garage door opener / Roller shutter.

Compatible with safety devices such as photocells and safety edge.

Able to share to 10 other users for free.



Push notifications



Share access



User management



Connect up to 3 door



## ChowBELL Ways To Control Access

### Smartphones

Biibell allows you to check who rings the doorbell through 2-way audio and open the door on the Eyeopen APP.

### RFID cards

RFID cards are supported.

enabling multiple users to access.

electronic door directly. (Large capacity of 5000 users)



Video intercom



Motion Detection



Notification



Full HD 1080P



Easy Installation

## ChowCAM

### Set up

in your front entrance & indoor space to make sure every corner of to make sure every corner of your home or office is protected



Built-in PIR sensor for motion detection.



Worrying the kids haven't returned home?  
Now you may connect single or multiple IO



Built-in high performance IR LED provides illumination up to 25m distance at night.



With 100° wide angle lens captures high resolution image and video.





# Application



**Swing Gate  
Opener**



**Sliding Gate  
Opener**



**Garage door  
Opener**



**IoT Solution**



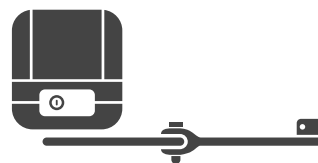
# Smart Module

## The gate opener with build-in WIFI/Bluetooth module

Our WBT module, a WiFi/Bluetooth connecting device working with CHOW! APP, makes the operation of gate openers easier for anyone who uses smartphones.

The WBT Module integrates the automation of many gates into one smart application, allowing users to monitor and operate their gates from anywhere, anytime.

The WBT module is available for all TMT products. Through ChowHUB, gate operators from other brands can also be integrated into the TMT ecosystem.



AVAILABLE IN 2023 Q1



**NEW**

**CLIFFORD**

**NEW**

**ARMSTRONG**



# SWING GATE



Model	Clifford 400	Clifford 500		Clifford 400/500
Category	Swing Gate Opener	Swing Gate Opener	Working /Operating temperature	-20°C to +50°C
Max gate length / Max gate weight	3M/350Kg,450Kg	4.5M/450Kg,550Kg	Duty cycle	50%
Motor power supply	24Vdc	24Vdc	Gear type	Worm gear
Power supply	230VAC (50-60Hz)	230VAC (50-60Hz)	Operational current(A)	6 A
Peak thrust	1600 N	1600 N	Absorbed power(W)	144 W
Protection grade(IP)	IP44	IP44	Manual release	Key

# SWING GATE



Model	Armstrong 300	Armstrong 400	Armstrong 600		Armstrong 300/400/600
Category	Swing Gate Opener	Swing Gate Opener	Swing Gate Opener	Working /Operating temperature	-20°C to +50°C
Max gate length / Max gate weight	3M/300Kg	4M/400Kg	5M/500Kg	Duty cycle	50%
Motor power supply	110-240VAC (50-60Hz)	110-240VAC (50-60Hz)	110-240VAC (50-60Hz)	Gear type	Worm gear
Power supply	110-240VAC (50-60Hz)	110-240VAC (50-60Hz)	110-240VAC (50-60Hz)	Operational current(A)	0.87 A
Peak thrust	1900 N	1900 N	1900 N	Absorbed power(W)	180W
Protection grade(IP)	IP44	IP44	IP44	Manual release	Hex key

AVAILABLE IN 2023 Q2



**NEW**

**HERMIT**

# THE INVISIBLE SWING GATE OPENER

## The invisible Gate Opener

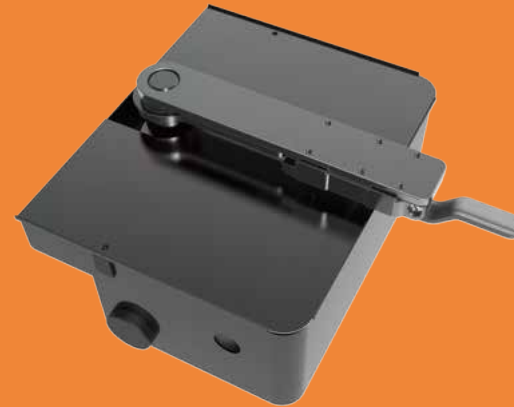
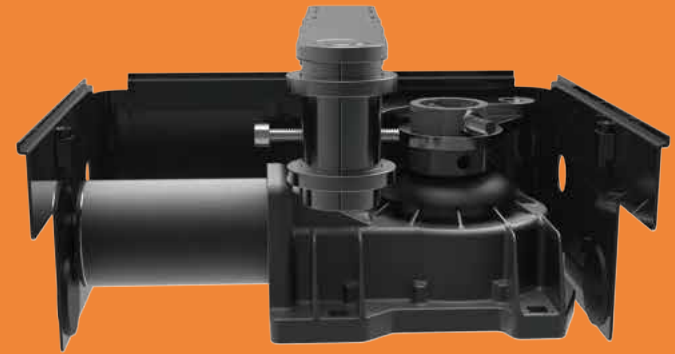
- Designed to operate down below the ground which has no apparent motor structure attached on the gate.
- DC swing system for better speed adjustment and slow down.
- Adjustable Open and Close points to determine the travel easily.
- Key release design for power failure

## Safe & Easy To Operate

- Compatible with safety device and access control system
- Easy parameters adjusting with digits led display and buttons
- 6 categories / 20+ parameters meet the request of different gates.

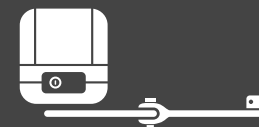
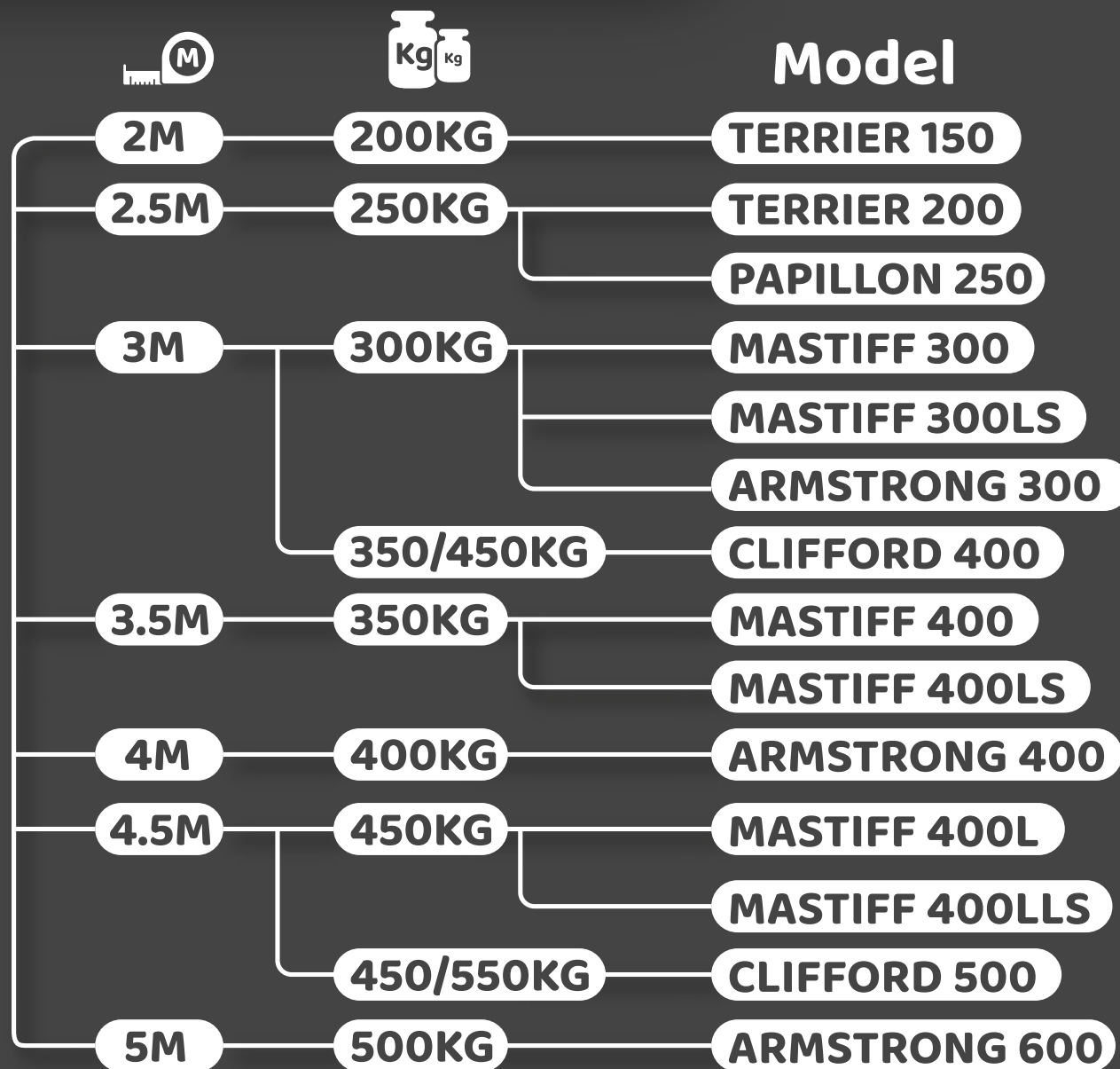
## Smartphone control

- Control your gates with TMT Chow! app anytime, anywhere



Model	Hermit		Hermit
Category	Swing Gate Opener	Working /Operating temperature	-20°C to +50°C
Max gate length / Max gate weight	3.5M/350Kg	Duty cycle	70%
Motor power supply	24Vdc	Gear type	Worm gear
Power supply	230Vac (50Hz)	Operational current(A)	4.2A
Peak thrust	3500N/8000N	Absorbed power(W)	100W
Protection grade(IP)	IP67	Manual release	Key

# Selection Guide



PAPILLON 250



TERRIER 150 / 200



MASTIFF 300 / 300LS



MASTIFF 400 / 400L / 400LS / 400LLS



ARMSTRONG 300 / 400 / 600



CLIFFORD 400 / 500



## Sliding



BOXER 500 / 800



HUSKY 700 / 1200 / 1500



MARBLE 80 / 100 / 120

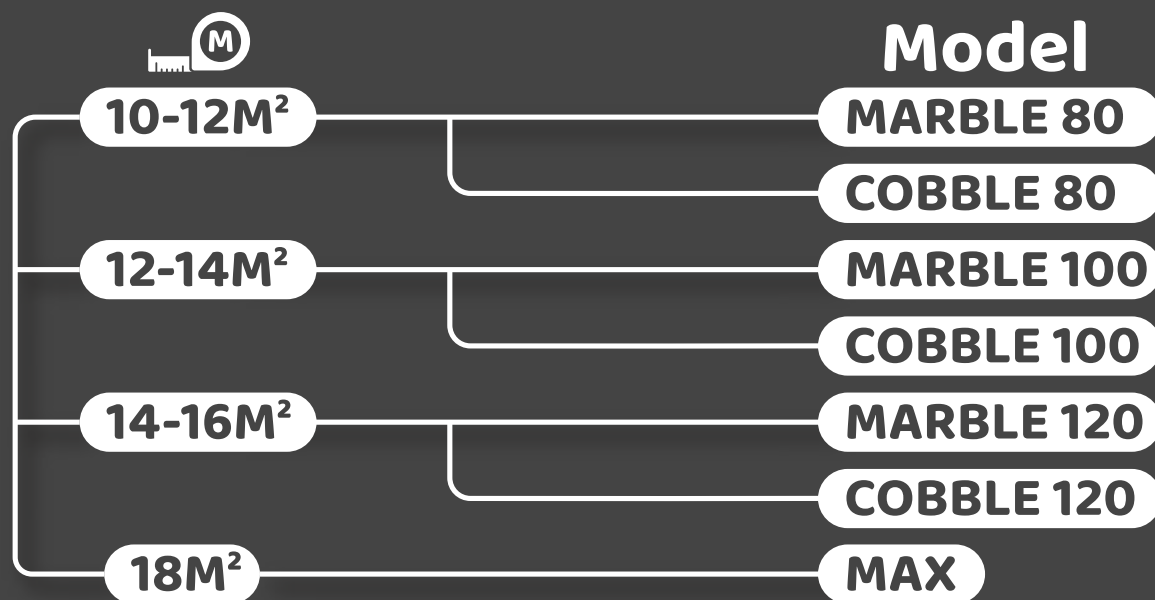


COBBLE 80 / 100 / 120



MAX

## Garage

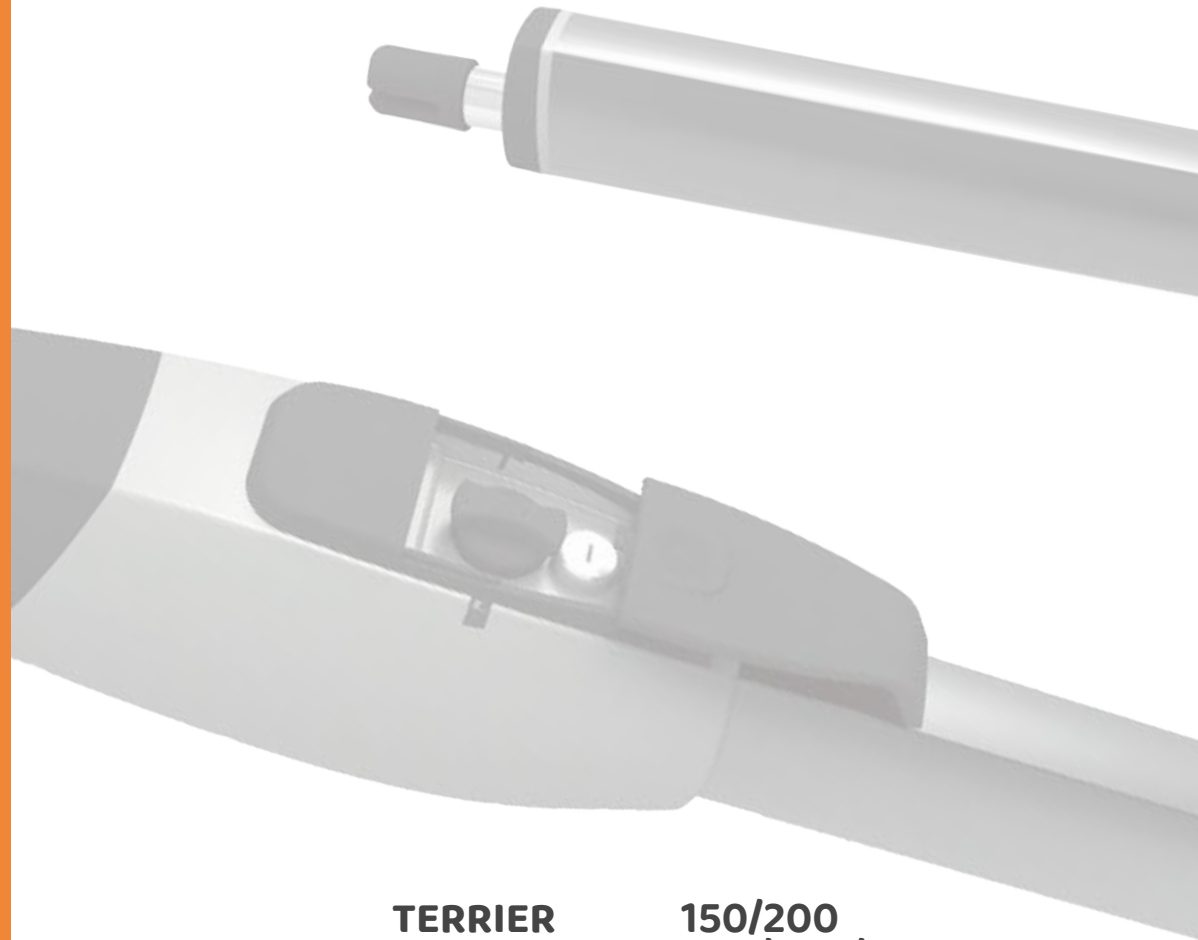


# AUTOMATION SWING GATE



**AUTOMATION FOR SWING GATES**

# 01

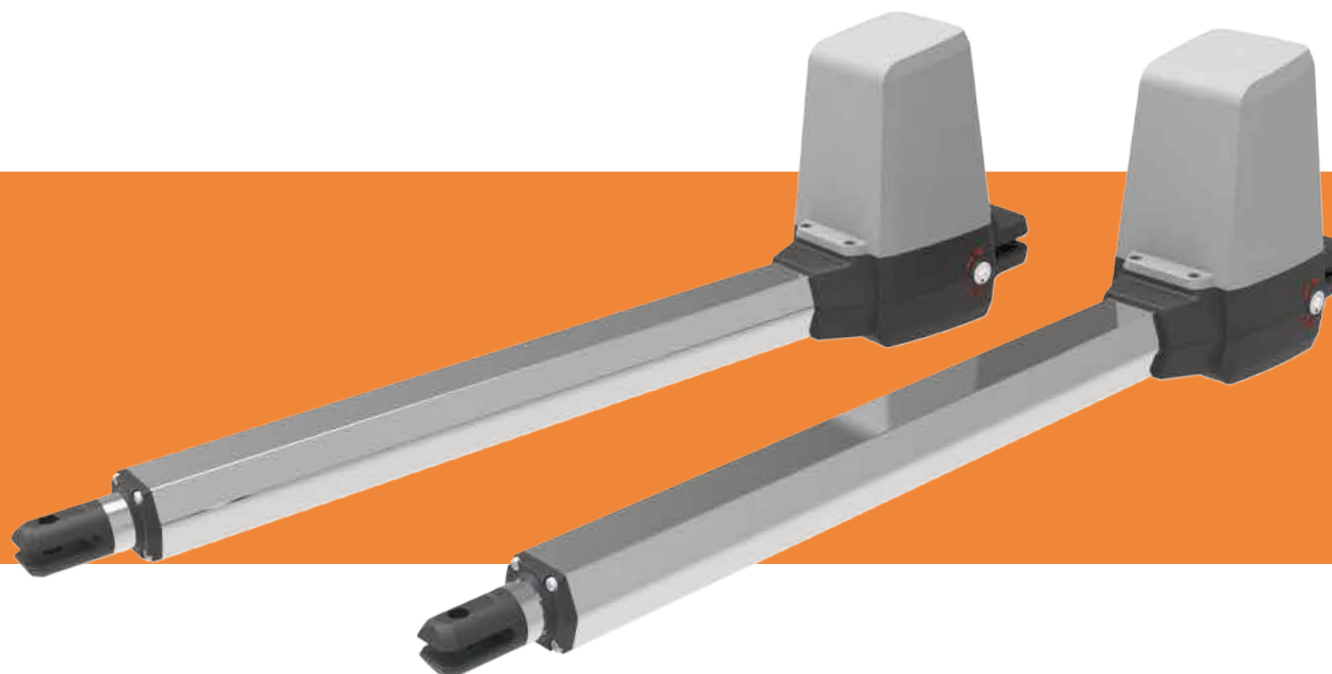


<b>TERRIER</b>	<b>150/200</b>
<b>MASTIFF</b>	<b>300/400/400L</b>
<b>MASTIFF LS</b>	<b>300LS/400LS/400LLS</b>
<b>PAPILLON</b>	<b>250</b>

**Guaranteed Quality Easy Maintenance**

Build for high duty cycles for intensive use.  
Manual release available for emergencies.

# TERRIER



Model	Terrier 150	Terrier 200		Terrier 150/200
Category	Swing Gate Opener	Swing Gate Opener	Working /Operating temperature	-20°C to +50°C
Max gate length / Max gate weight	2M/200Kg	2.5M/250Kg	Duty cycle	50%
Motor power supply	24Vdc	24Vdc	Gear type	Worm gear
Power supply	110-240VAC (50-60Hz)	110-240VAC (50-60Hz)	Operational current(A)	4.2 A
Peak thrust	2000N	2500N	Absorbed power(w)	100W
Protection grade(IP)	IP44	IP44	Manual release	Allen Key





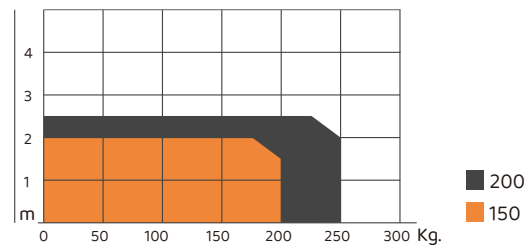
## Economical Choice For Light

Corrosion resistant treatment for metal surfaces allow motors to handle extreme weather.  
Strong structure with durable materials supports intensive use.

## Easy Manual Release

Gates are able to be released effortlessly with a allen key in the case of power failure.

## Application Diagram

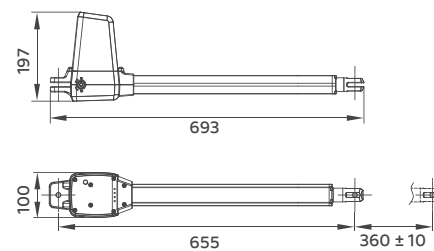


## Features :

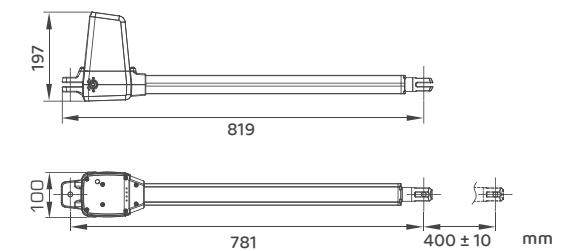
- 24Vdc gear motor for safety installation and residential usage
- Two back-up batteries for non-stop operation (optional)
- Over-current function setting meets European safety regulation
- Soft starting and Soft closing
- Stainless screws and brackets give great resistance to critical environments

## Dimensions

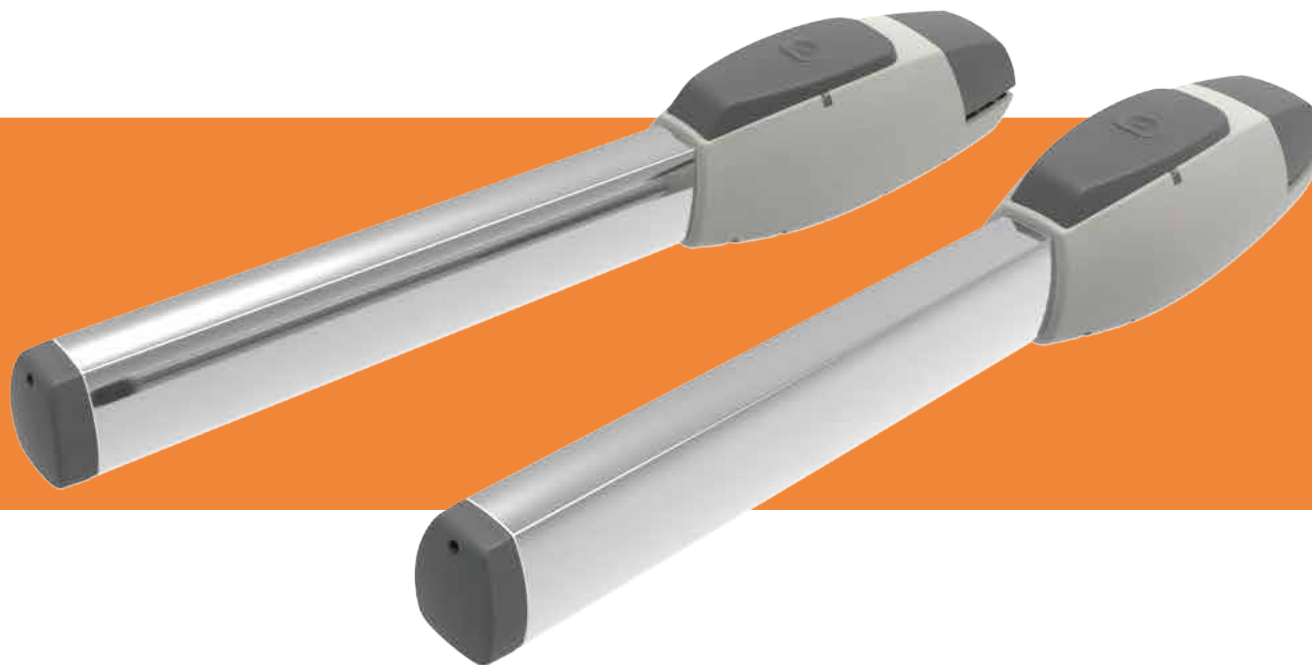
Terrier 150



Terrier 200



# MASTIFF



Model	Mastiff 300	Mastiff 400	Mastiff 400L		Mastiff 300/400/400L
Category	Swing Gate Opener	Swing Gate Opener	Swing Gate Opener	Working /Operating temperature	-20°C to +50°C
Max gate length / Max gate weight	3M/300Kg	3.5M/350Kg	4.5M/450Kg	Duty cycle	50%
Motor power supply	24Vdc	24Vdc	24Vdc	Gear type	Worm gear
Power supply	110-240VAC (50-60Hz)	110-240VAC (50-60Hz)	110-240VAC (50-60Hz)	Operational current(A)	5.5 A
Peak thrust	3000N	3500N	4500N	Absorbed power(w)	144W
Protection grade(IP)	IP44	IP44	IP44	Manual release	Key



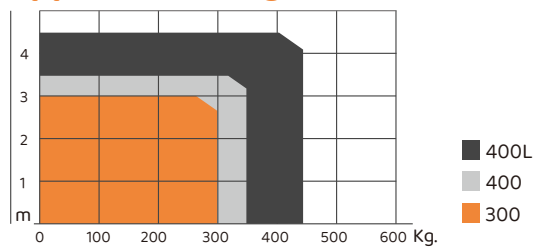
## Motor durability

Aluminum extrusion external tube with special anode surface treatment provides excellent durability.  
Worm gear provides durability and silence in motor operation.

## Built-in

Built-in Limit Switch is optionally adjustable in opening and closing .  
Built-in Encoder is optional for intelligent calculation of motor movement.

## Application Diagram

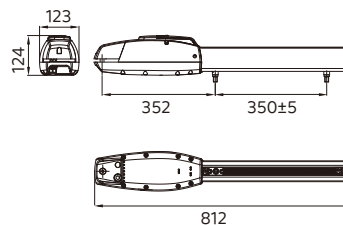


## Features :

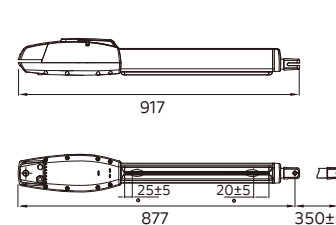
- 24Vdc electromechanical heavy duty 5540/2600RPM gear motor
- Save up to 50% on installation time
- Precise adjustment of open/close position
- Customized key for easy manual release device
- Backup battery (optional)

## Dimensions

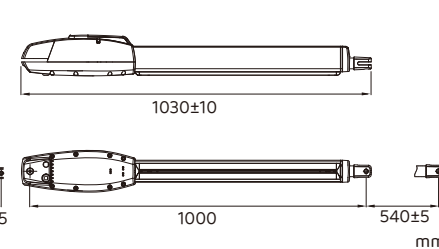
Mastiff 300



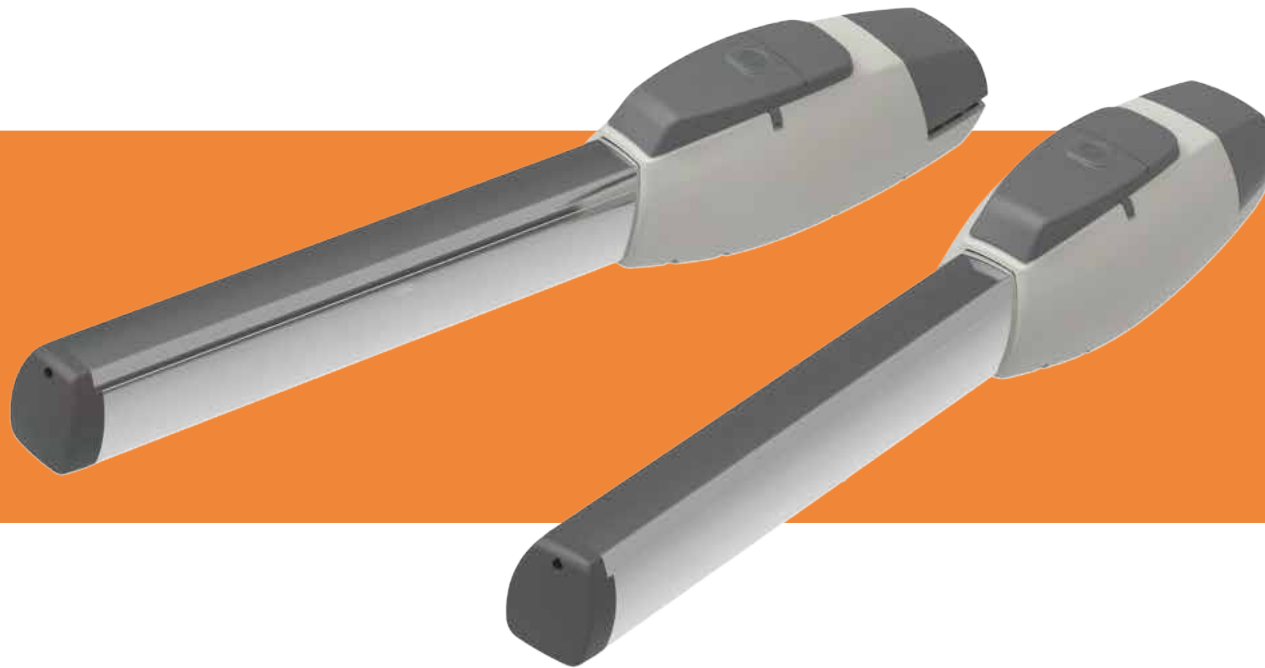
Mastiff 400



Mastiff 400L

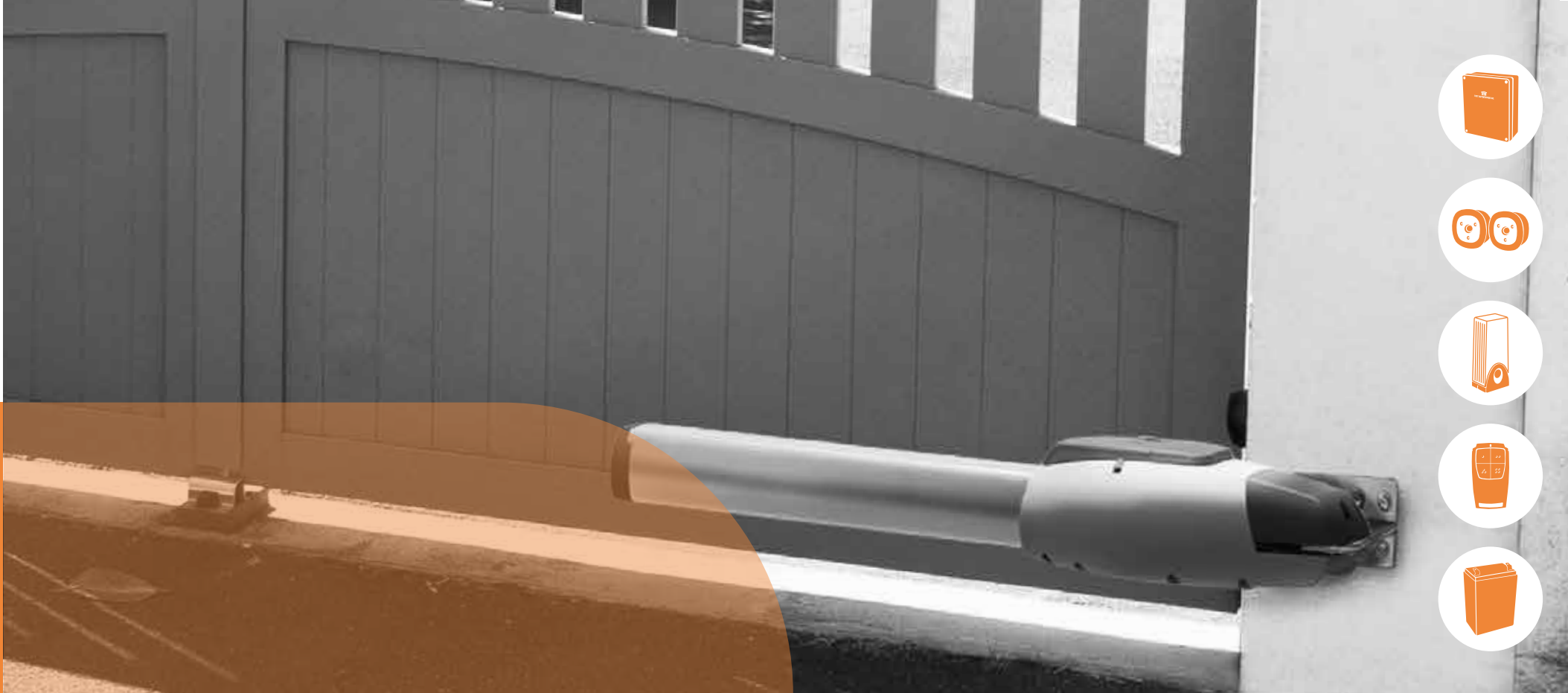


# MASTIFF LS



Model	Mastiff 300LS	Mastiff 400LS	Mastiff 400LLS		Mastiff 300LS/400LS/400LLS
Category	Swing Gate Opener	Swing Gate Opener	Swing Gate Opener	Working /Operating temperature	-20°C to +50°C
Max gate length / Max gate weight	3M/300Kg	3.5M/350Kg	4.5M/450Kg	Duty cycle	50%
Motor power supply	24Vdc	24Vdc	24Vdc	Gear type	Worm gear
Power supply	110-240VAC (50-60Hz)	110-240VAC (50-60Hz)	110-240VAC (50-60Hz)	Operational current(A)	5.5 A
Peak thrust	3000N	4000N	4500N	Absorbed power(w)	144W
Protection grade(IP)	IP44	IP44	IP44	Manual release	Key





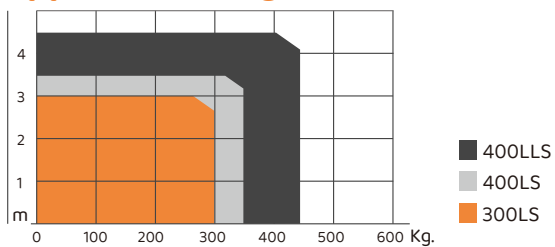
## Motor durability

Aluminum extrusion external tube with special anode surface treatment provides excellent durability.  
Worm gear provides durability and silence in motor operation.

## Built-in

Built-in Limit Switch is optionally adjustable in opening and closing.  
Built-in Encoder is optional for intelligent calculation of motor movement.

## Application Diagram

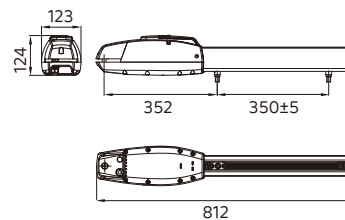


## Features :

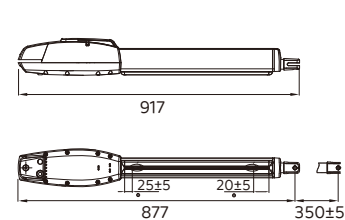
- 24Vdc electromechanical heavy duty 5540/2600RPM gear motor
- Save up to 50% on installation time
- Precise adjustment of open/close position
- Back up batteries available

## Dimensions

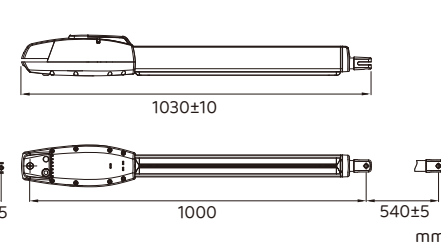
Mastiff 300



Mastiff 400



Mastiff 400L





# PAPILLON



Model	Papillon 250		Papillon 250
Category	Swing Gate Opener	Working /Operating temperature	-20°C to +50°C
Max gate length / Max gate weight	2.5M/250Kg	Duty cycle	70%
Motor power supply	24Vdc	Gear type	Worm gear
Power supply	110-240VAC (50-60Hz)	Operational current(A)	5.5 A
Peak thrust	2500N	Absorbed power(W)	144W
Protection grade(IP)	IP44	Manual release	Key



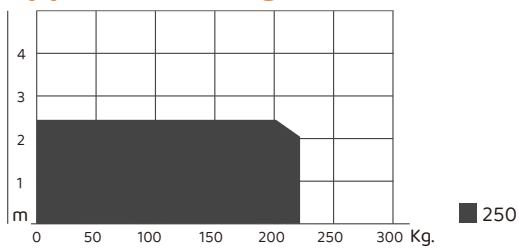
## Provide on demand

Customers can choose to use a hall sensor, limit switch or stopper based on their requirements. Aluminum die-casting and steel metal stamping arms are available.

## Built-in

Remotely open and close gates with Chow! App  
Programming the motor through Chow! App  
Secure your house even better with ChowCAM and ChowBELL

## Application Diagram

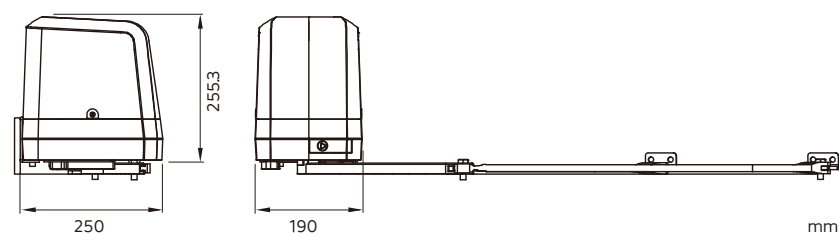


## Features :

- Spaceless Installation for gates under 250 kg
- Variable Motor Type
- Built-in Smart Control

## Dimensions

Papillon 250



# AUTOMATION SLIDING GATES

The background is a solid orange color. A large, white, stylized line-art graphic of a sliding gate roller is positioned vertically in the center, extending from the top to the bottom of the page. The roller has a circular wheel at the top and a rectangular base with a circular hole. The text 'AUTOMATION SLIDING GATES' is written in large, white, bold, sans-serif capital letters across the upper half of the page, partially overlapping the roller graphic.

**AUTOMATION FOR SLIDING GATES**

# 02



**BOXER  
HUSKY**

**500/800  
500/700/  
1200/1500**

### **Stylish Design Reliable Functions**

Motor speed can go up to 33cm/s with 500kg force.  
Manual release is available when meeting emergencies.

# BOXER



Model	Boxer 500	Boxer 800		Boxer 500 / 800
Category	Swing Gate Opener	Swing Gate Opener	Working /Operating temperature	-20°C to +50°C
Max gate length / Max gate weight	6M/500Kg	8M/800Kg	Duty cycle	70%
Motor power supply	12/24Vdc	24Vdc	Gear type	Worm gear
Power supply	110-240VAC (50-60Hz)	110-240VAC (50-60Hz)	Operational current(A)	5.5 A for maximum 10 secs
Peak thrust	5000N	8000N	Absorbed power(W)	144w
Protection grade(IP)	IP44	IP44	Manual release	Key



### Provide on demand

Allows users to monitor the motor operation status through the LED display panel on the control board

Motor speed can go up to 33cm/s with 500kg force

Using specific key to release which is more secure

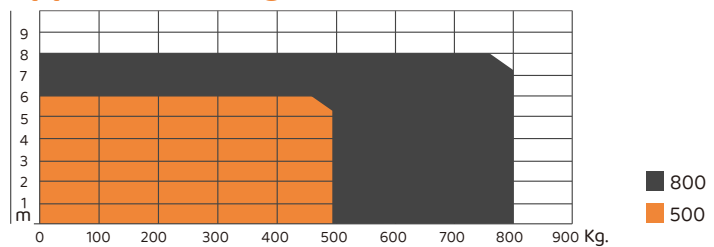
### Built-in

Remotely open and close gates with Chow! App.

Programming the motor through Chow! App.

Secure your house even better with ChowCAM and ChowBELL.

### Application Diagram

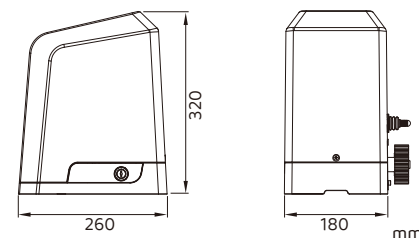


### Features :

- Motor Current Detection
- High Speed Version
- Effortless Quick Release Device
- Built-in Smart Control

### Dimensions

Boxer 500 / 800



# HUSKY



Model	Husky 500 / 700	Husky 1200 / 1500		Husky 500/700/1200/1500
Category	Swing Gate Opener	Swing Gate Opener	Working /Operating temperature	-20°C to +50°C
Max gate length / Max gate weight	6M/500Kg , 8M/700Kg	12M/1200Kg , 12M/1500Kg	Duty cycle	70%
Motor power supply	230Vac (50-60Hz)	230Vac (50-60Hz)	Gear type	Worm gear
Power supply	230Vac (50-60Hz)	230Vac (50-60Hz)	Operational current(A)	0.8 A/1.32 A/1.85 A/1.94 A
Peak thrust	5000N / 5000N	12000N / 15000N	Absorbed power(w)	250W/305W/420W/440W
Protection grade(IP)	IP54	IP54	Manual release	Allen Key





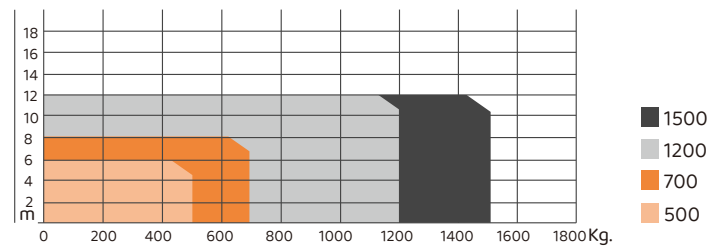
## Provide on demand

The control panel uses rotary knob for adjusting overcurrent and resistance  
AC motor with great force up to 1500Kg output

## Built-in

Remotely open and close gates with Chow! App.  
Programming the motor through Chow! App.  
Secure your house even better with ChowCAM and ChowBELL.

## Application Diagram

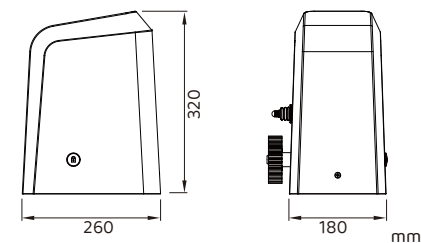


## Features :

- User Friendly Design
- Perfect for Heavy gate Application
- Built-in Smart Control

## Dimensions

Husky 700/1200/1500





# **AUTOMATION GARAGE DOORS**

**AUTOMATION FOR GARAGE DOORS**

# 03



TMT  
TMT MOTOR CO., LTD.

**MAX  
MARBLE  
COBBLE**

**80/100/120  
80/100/120**

**Powerful, Enduring and Safe Recommend**

Soft start/stop operation can extend hardware life and reduce maintenance.

Motor built-in with LED light (specific model)

# COBBLE



Model	Cobble 80	Cobble 100	Cobble 120		Cobble 80 /100/120
Category	Garage Door Opener	Garage Door Opener	Garage Door Opener	Working /Operating temperature	-20°C to +50°C
Rail length	3.3/3.6/3.9M	3.3/3.6/3.9M	3.3/3.6/3.9M	Duty cycle	20%
Motor power supply	24Vdc	24Vdc	24Vdc	Gear type	Worm gear
Power supply	110-240VAC (50-60Hz)	110-240VAC (50-60Hz)	110-240VAC (50-60Hz)	Operational current(A)	3.33 A/4.17 A/5 A
Peak thrust	800N	1000N	1200N	Absorbed power(w)	80W/100W/120W
Rated door area	16m <sup>2</sup>	18m <sup>2</sup>	24m <sup>2</sup>	Lighting system	LED



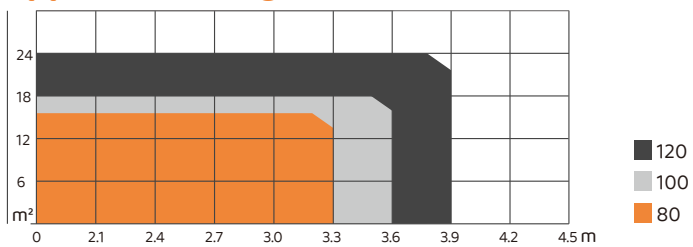
## Auto Detection

Allows users to check the current status of the motor while in operation.

## Smartphone Control

Remotely open and close doors with the Chow! app.  
Programming the motor through Chow! app.  
Extra home security and convenience with the Chow! Cam from anywhere and on any device.

## Application Diagram

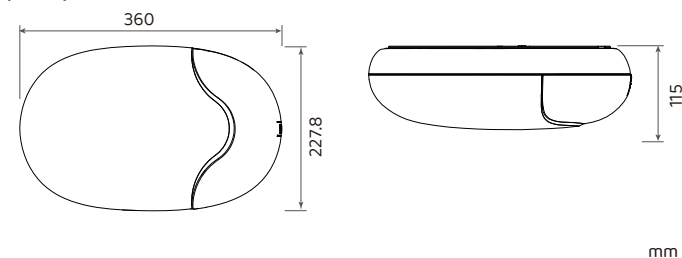


## Extra Safety

- Smooth operation with soft start/stop
- Obstruction detection sensor
- Lighten up every corner of your garage

## Dimensions

Cobble 80 /100/120





# MARBLE



Model	Marble 80	Marble 100	Marble 120		Marble 80 /100/120
Category	Garage Door Opener	Garage Door Opener	Garage Door Opener	Working /Operating temperature	-20°C to +50°C
Rail length / Rated door area	3.3/3.6/3.9M	3.3/3.6/3.9M	3.3/3.6/3.9M	Duty cycle	20%
Motor power supply	24Vdc	24Vdc	24Vdc	Gear type	Worm gear
Power supply	110-240VAC (50-60Hz)	110-240VAC (50-60Hz)	110-240VAC (50-60Hz)	Operational current(A)	3.33 A/4.17 A/5 A
Peak thrust	800N	1000N	1200N	Absorbed power(w)	80w/100w/120w
Rated door area	16m <sup>2</sup>	18m <sup>2</sup>	24m <sup>2</sup>	Lighting system	LED



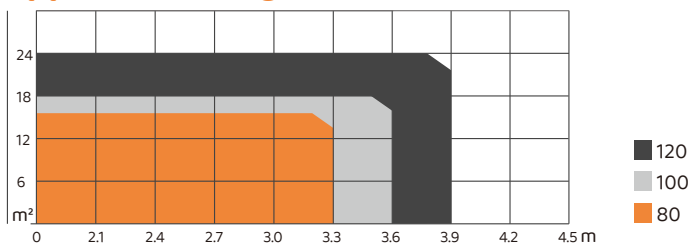
## Provide on demand

Additional backup battery is available which allows you to open/close your door even when the power is out.  
Soft start/stop operation can extend hardware life and reduce maintenance.  
Motor built-in with LED light.

## Built-in

Remotely open and close gates with Chow! App.  
Programming the motor through Chow! App.  
Secure your house even better with ChowCAM and ChowBELL.

## Application Diagram

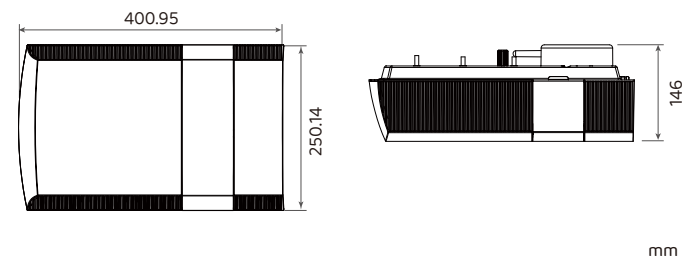


## Features :

- Built-in Smart Control
- Extra Safety
- Tranquillity

## Dimensions

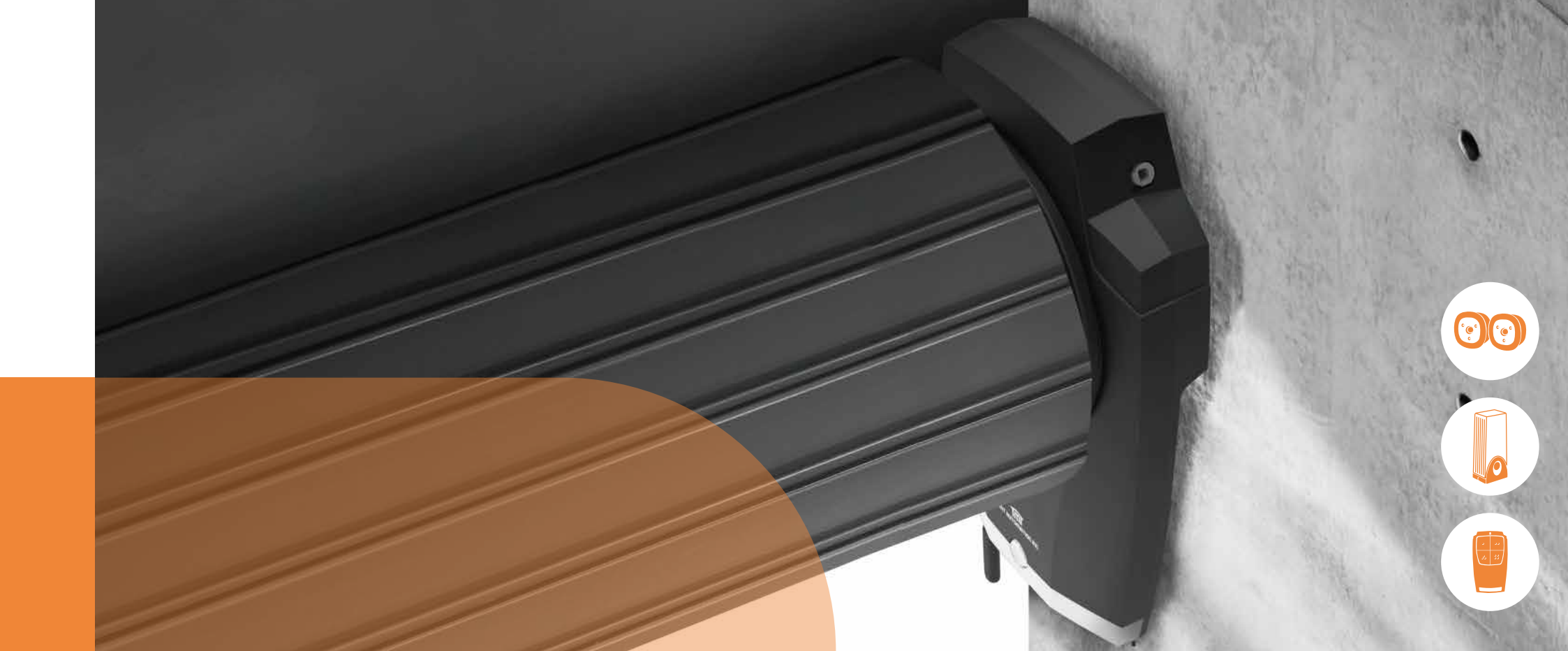
Marble 80 /100/120



# MAX



Model	Max		Max
Category	Garage Door Opener	Working /Operating temperature	+5°C to +40°C
Rated door area / Max gate weight	18m <sup>2</sup> /120kg	Duty cycle	20%
Motor power supply	24Vdc	Gear type	Worm gear
Power supply	110-230Vac(50-60Hz)	Operational current(A)	3 A
Peak thrust	650N	Absorbed power(W)	120 W
Protection grade(IP)	IP44	Controller voltage	24Vdc



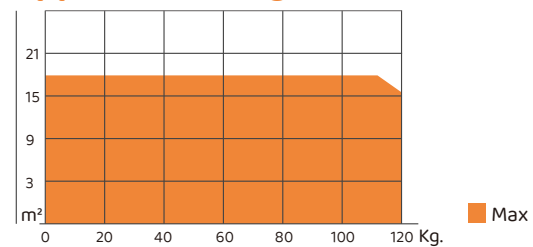
## Provide on demand

Additional backup battery is available which allows you to open/close your door even when the power is out  
Soft start/stop operation can extend hardware life and reduce maintenance

## Built-in

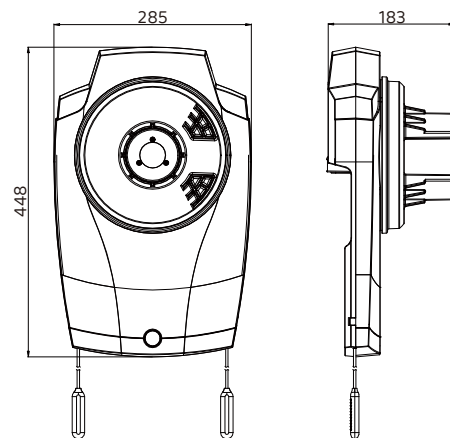
Remotely open and close gates with Chow! App  
Programming the motor through Chow! App  
Secure your house even better with ChowCAM and ChowBELL

## Application Diagram



## Dimensions

Max



mm

# **AUTOMATION ACCESSORIES**

**AUTOMATION FOR ACCESSORIES**



# 04



**CONTROL SYSTEM  
TRANSMITTER  
PHOTOCELL  
WIRELESS KEYPAD  
KEY SELECTOR  
FLASHING LIGHT  
WIRELESS KEY BUTTON  
BACKUP BATTERY SET  
Nylon Gear Rack  
Metal Gear Rack**

**CB/CB2  
TM3/TM4  
H2  
P1  
K1  
FL2  
PB1**

# ACCESSORIES

## Control System



### Control System CB

**Model** Control System  
**Power** Power input 110VAC/  
230VAC are both available

**Backup Batteries**  
Two backup batteries  
for power failure (optional)  
**Built-in**  
Built-in RF receiver

**Regulation**  
European  
safety regulation



### Control System CB2

**Model** Control System  
**Power** Power input 110VAC/  
230VAC are both available

**Backup Batteries**  
Two backup batteries  
for power failure (optional)  
**Built-in**  
Built-in RF receiver

**Regulation**  
European  
safety regulation

## Transmitter



### Transmitter TM4

**Model** Transmitter

**Channel Transmitter**  
Four-channel transmitter  
with programmable features

**Features**  
Foolproof design with  
lock buttons on the side



### Transmitter TM3

**Model** Transmitter

**Channel Transmitter**  
Four-channel transmitter  
with programmable features

**Features**  
Up to 50m transmitting distance  
315/433MHz frequency available

# ACCESSORIES

## Photocell



**Photocell  
H2**

**Model** Photocell

**Sensing Range**

Safety device for up to 15m sensing range

**Features**

Waterproof design for outdoor environment

## Wireless Keypad



**Wireless Keypad  
P1**

**Model** Wireless Keypad

**Frequency**

433.92MHz frequency

**IP Ratings**

IP54

**Features**

Requires 2 AAAA batteries  
50m transmission distance

## Key Selector



**Key Selector  
K1**

**Model** Key Selector

**IP Ratings**

IP54

**Features**

Easy installation and intuitive operation

# ACCESSORIES

## Battery For Gate Opener



### Swing Backup Battery

**Model**  
Backup Battery Set

**Application**  
Swing gate  
**Voltage**  
12V/2.2A x 2pcs

**Dimension**  
70 x 47 x 103mm



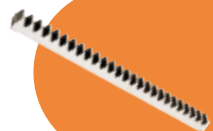
### Sliding Backup Battery

**Model**  
Backup Battery Set

**Application**  
Sliding gate  
**Voltage**  
12V/1.3A x 2pcs

**Dimension**  
98 x 44 x 58mm

## Rack



### Metal Rack

**Model** Metal

**Dimension**  
1000 x 30 x 10mm



### Nylon Rack

**Model** Nylon

**Dimension**  
1022 x 26.3 x 19.7mm

# ACCESSORIES

## Flashing Light



### Flashing Light FL2

**Model**  
Flashing Light

**Power Supply**  
24Vdc  
**Available**  
with LED or  
E14 15W light bulb

**Dimension**  
85 x 60.5 x 40.5mm

## Wireless Key Button



### Wireless Key Button PB1

**Model**  
Wireless Key button

**Application**  
Indoor use  
**Dimension**  
70 x 120 x 14mm

**Features**  
Transmitting distance up to 50m  
4 Channel for programming  
1 pc A23 12V battery included  
433MHz frequency available





